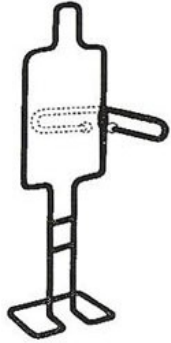


LADDER MANNIQUINS AND FLEXIBLE FORMS



#3500
ABSTRACT FORM
WITH ARM FOR
SLACKS. 57" HIGH, 18"
WIDE. AVAILABLE IN
BLACK AND WHITE.



#3501
LADIES' LADDER
MANNEQUIN. 67" HIGH,
16" SHOULDER WIDTH,
11" LADDER WIDTH.
AVAILABLE IN BLACK.



#3502
MENS' LADDER
MANNEQUIN. 72" HIGH,
17" SHOULDER WIDTH,
12" LADDER WIDTH.
AVAILABLE IN BLACK.



#3503
GRID TOWER, 14" x 18"
BASE. 60" HIGH.
AVAILABLE IN BLACK.



#3504
FLEXIBLE FORM.
UPRIGHT ADJUST 36"
TO 72". INCLUDES 8"
BASE. AVAILABLE IN
BLACK.



#3505
BLACK 59"
FLEXIBLE HANGER.
INCLUDES 4"
CHROME HOOK.



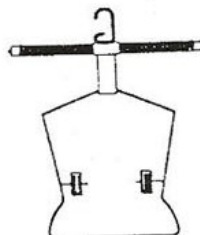
#3508
BLACK 21" WIDE
FLEXIBLE T-STAND.
ADJUSTABLE FROM
14" TO 28".
INCLUDES 7" BASE.



#3506
BLACK 21"
FLEXIBLE
COORDINATE
HANGER. 13" HIPS,
INCLUDES 4"
CHROME HOOK
WITH CLIPS.



#3509
BLACK 21" WIDE
FLEXIBLE HANGER
WITH 4" CHROME
HOOK.



#3507
BLACK 21"
FLEXIBLE
COORDINATE
HANGER. 14" HIPS,
12" SHOULDERS,
16½" DROP.
INCLUDES 4" HOOK
WITH CLIPS.



#3510
BLACK 18½"
FLEXIBLE HANGER.

TORSO FORMS

#3600
MEN'S COAT FORM.
HEIGHT 33½",
SHOULDER 18½",
CHEST 38½" AND
WAIST 29".



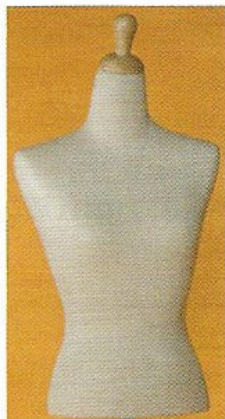
#3601
MEN'S SHIRT FORM.
HEIGHT 25",
SHOULDER 17½",
CHEST 37" AND
WAIST 31".



#3602
LADIES' DRESS
FORM, HEIGHT
30½", SHOULDER
16", BUST 34",
WAIST 24½" AND
HIP 34".



#3603
LADIES'
BLOUSE
FORM.
HEIGHT 24",
SHOULDER
14", BUST
33" AND
WAIST 23½".



#3608
CHILDREN'S
TORSO FORM.
AVAILABLE IN
XS, S, M, & L.



#3609
MALE TORSO
FORM.
AVAILABLE IN
BLACK & WHITE.
HEIGHT 31½",
SHOULDER 18",
CHEST 40" AND
WAIST 33".



#3610
FEMALE TORSO
FORM.
AVAILABLE IN
BLACK & WHITE.
HEIGHT 30",
SHOULDER 16",
BUST 37",
WAIST 26" AND
HIP 37".



NOTE: JERSEY FORM. LIGHT OAK FINISH NECK BLOCKS. INCLUDED WITH FORM.
BASES SOLD SEPARATELY.
AVAILABLE IN BLACK AND WHITE.

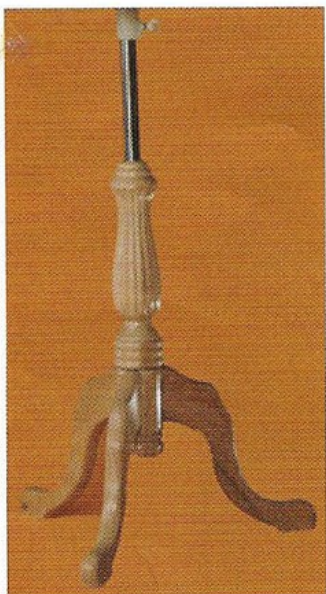
BASES FOR TORSO FORMS



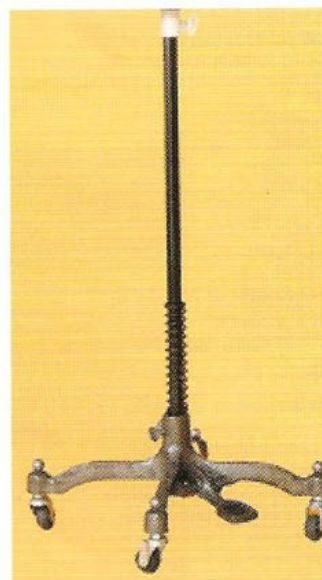
#3677
ROUND WOODEN BASE WITH UPRIGHT. FITS # 3608
CHILDREN'S TORSO FORMS ONLY. LIGHT OAK
FINISH.



#3687
ROUND WOODEN BASE WITH UPRIGHT. FITS #3600
SERIES TORSO FORMS. LIGHT OAK FINISH.



#3688
WOODEN TRIPOD BASE. WITH UPRIGHT. FITS #3600
SERIES TORSO FORMS. LIGHT OAK FINISH.

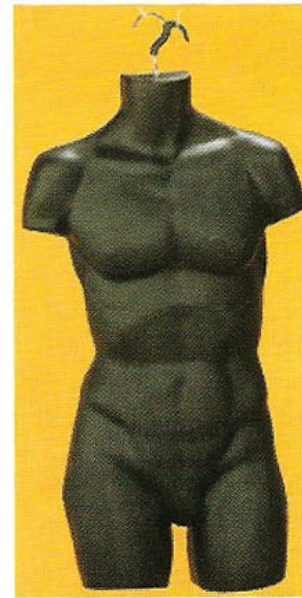


#3699
DRESS MAKER BASE WITH UPRIGHT. AVAILABLE IN
BLACK, BRONZE AND CHROME FINISH.

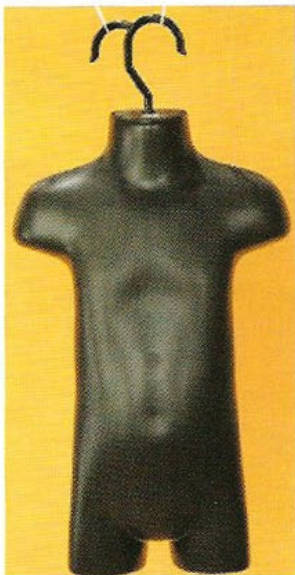
TORSO FORMS



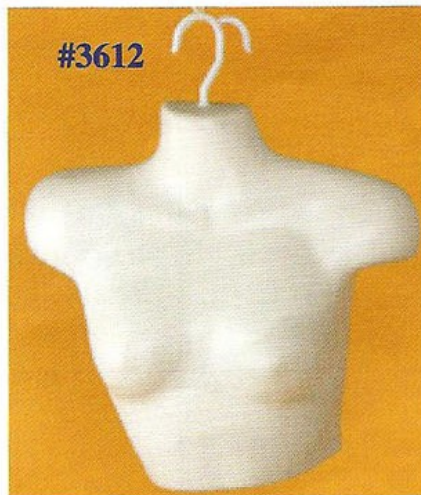
#3604
LADIES' TORSO FORM MADE OF DURABLE MOLDED PLASTIC WITH HOLLOW BACKS. HEIGHT 30½", AND SHOULDER 16". AVAILABLE IN BLACK, SKIN TONE, CLEAR FROSTED AND WHITE.



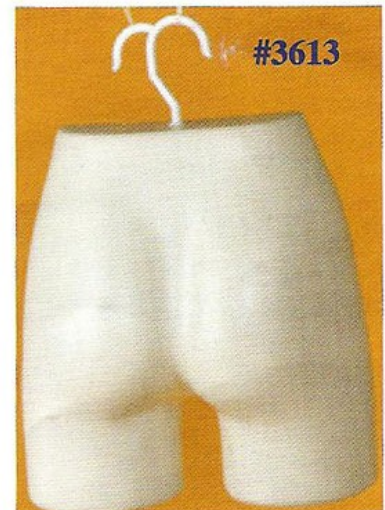
#3606
MEN'S TORSO FORM MADE OF DURABLE MOLDED PLASTIC WITH HOLLOW BACKS. HEIGHT 34" AND SHOULDER 17". AVAILABLE IN BLACK, CLEAR FROSTED AND WHITE.



#3607
KIDS' TORSO FORM MADE OF DURABLE MOLDED PLASTIC WITH HOLLOW BACKS. HEIGHT 18½", AND SHOULDER 11". AVAILABLE IN BLACK AND WHITE.



#3612



#3613

BUST & HIP FORM, IN WHITE, BLACK & CLEAR FROSTED FINISH.